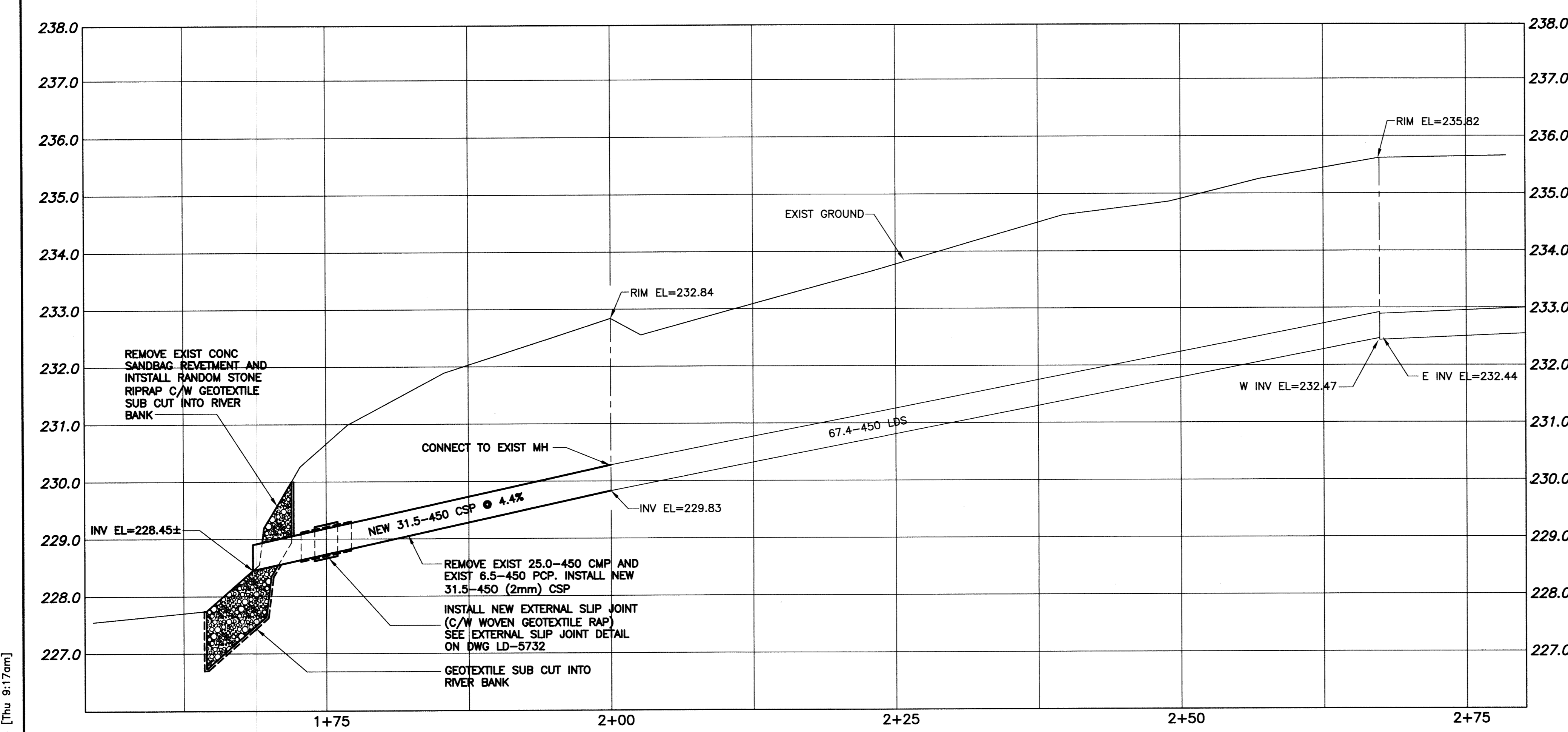


File Name: E:\Projects\2011\11-0107-33\Doc.Control\ToBeReleased\DWG\11-0107-33_LD_5726-Rev 1.dwg - Tab: LD-5726 Plotted By: Dbercoche 12/01/05 [Thu 8:17am]



NOTE:

- PIPE ELEVATIONS ARE ESTABLISHED FROM CITY OF WINNIPEG RECORD DRAWINGS
- ALL EXCAVATED MATERIAL TO BE MOVED OFF SITE

PROPERTY LIMITS DELINEATION

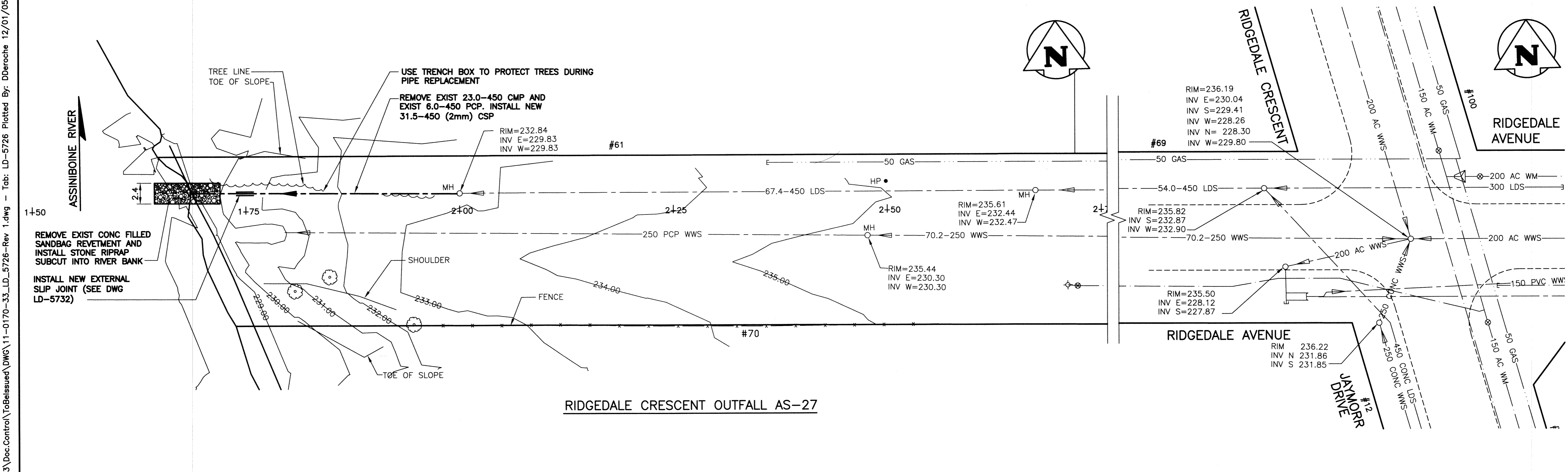
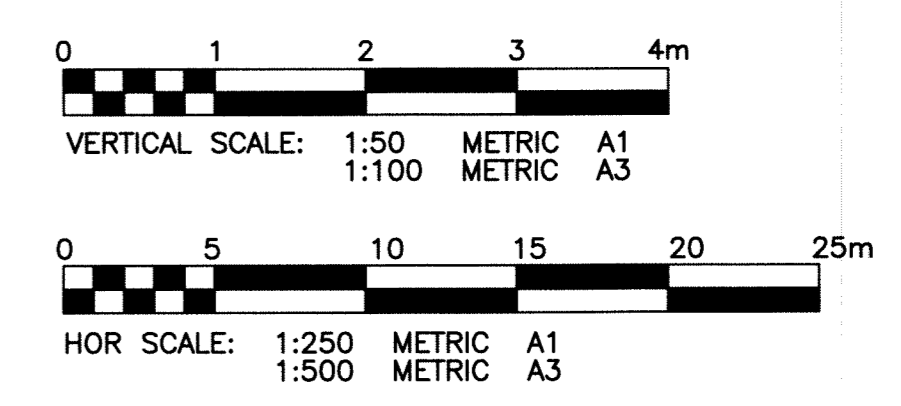
DELINEATION OF PROPERTY LIMITS AS SHOWN ON THIS DWG DOES NOT REPRESENT A "LEGAL SURVEY". KGS GROUP MAKES NO REPRESENTATION OR WARRANTY AS TO THE ACCURACY OF PROPERTY LIMITS DELINEATED ON THIS DWG, NOR ON THE DIMENSIONAL ACCURACY OF DWG FEATURES RELATIVE TO THOSE PROPERTY LIMITS.

WARNING

- NOTIFY THE GAS COMPANY OF THE PROPOSED LOCATION OF EXCAVATION.
- TAKE PRECAUTION TO AVOID DAMAGE TO GAS COMPANY INSTALLATIONS.
- SEE PROVINCIAL REGULATION 210/72 FOR DETAILS.

METRIC

WHOLE NUMBERS INDICATE MILLIMETRES
DECIMALIZED NUMBERS INDICATE METRES



RIDGEDALE CRESCENT OUTFALL AS-27

| EXISTING | LEGEND-PLAN | PROPOSED | EXISTING | LEGEND-PLAN | PROPOSED | EXISTING | LEGEND-PROFILE | PROPOSED |
|----------|---------------------|----------|--------------------|-------------|----------|----------|----------------|----------|
| 300 LDS | LAND DRAINAGE SEWER | 300 LDS | TEST HOLE | | | | | |
| 250 WWS | WASTE WATER SEWER | 250 WWS | GUY WIRE | | | | | |
| | GAS | | LIGHT STANDARD | | | | | |
| | HYDRO | | BACK OF CURB | | | | | |
| | M.T.S. | | CONCRETE | | | | | |
| 150 WM | WATERMAIN | 150 WM | ASPHALT | | | | | |
| | HYDRANT | | | | | | | |
| | VALVE | | SIDEWALK | | | | | |
| | MANHOLE | | PROPERTY LINE | | | | | |
| | CATCH BASIN | | SURVEY BAR | | | | | |
| | CURB INLET | | GEODETIC BENCHMARK | | | | | |
| | POLES T-MIS | | ELEVATION | | | | | |
| | POLES H-HYDRO | | | | | | | |

LOCATION APPROVED UNDERGROUND STRUCTURES

SUPV. U/G STRUCTURES COMMITTEE DATE

NOTE:
LOCATION OF UNDERGROUND STRUCTURES AS SHOWN ARE BASED ON THE BEST INFORMATION AVAILABLE. BUT NO GUARANTEE IS GIVEN THAT ALL EXISTING UTILITIES ARE SHOWN OR THAT THE GIVEN LOCATIONS ARE EXACT. CONFIRMATION OF EXISTENCE AND EXACT LOCATION OF ALL SERVICES MUST BE OBTAINED FROM THE INDIVIDUAL UTILITIES BEFORE PROCEEDING WITH CONSTRUCTION.

| NO. | REVISIONS | DATE | BY |
|-----|----------------------|----------|-----|
| 1 | RE-ISSUED FOR TENDER | 12/01/05 | RBO |
| 0 | ISSUED FOR TENDER | 11/12/19 | RBO |

KGS GROUP CONSULTING ENGINEERS

DESIGNED BY: RBO
CHECKED BY: RJH
DRAWN BY: DMW
APPROVED BY:

HOR. SCALE: 1:250
VERTICAL: 1:50

RELEASED FOR CONSTRUCTION: 11/11/03

ENGINEER'S SEAL

R.B. OFFMAN
Member
24701
REGISTERED PROFESSIONAL ENGINEER

CONSULTANT DRAWING NO. 11-0107-33_01

THE CITY OF WINNIPEG WATER AND WASTE DEPARTMENT

PROJECT TITLE: 2012 OUTFALL RENEWAL/REHABILITATION PROGRAM
RIDGEDALE CRESCENT OUTFALL (AS-27)
PROPOSED PLAN AND PROFILE

SHEET 01 OF 07
COMPUTER FILE NAME: 11-0107-33_01
CITY DRAWING NUMBER: LD-5726

APEGM
Certificate of Authorization
KGS Group
No. 245